

Good Homes

INDIA

GOOD DESIGN CHANGES EVERYTHING

A Times Group Publication ₹150

@goodhomesmagazine

@goodhomesmagazineindia

@goodhomesindia

VOLUME 17 ISSUE 03 MARCH - APRIL 2026

Introducing

**Architect
Monika
Choudhary's**
*column on
responsible
luxury, and
why you need
to get with it*

Find out how
to convert
your balconies
into standout
sanctuaries

**ALSO
INSIDE...**
*Some of the
loveliest
homes we've
ever seen*

Get the
lowdown on
raising the bar
for your family
and friends

This Summer
COOK UP A STORM!

From styles to designs, devices and more, we help you
curate and celebrate the modern Indian kitchen



MW52260301

POINT OF VIEW

FROM MATERIALS AND MANUFACTURING
TO THE LIFE CYCLE OF BUILDINGS...
SUSTAINABLE DESIGN IS BEGINNING
TO MOVE...

BEYOND *Greenwashing*

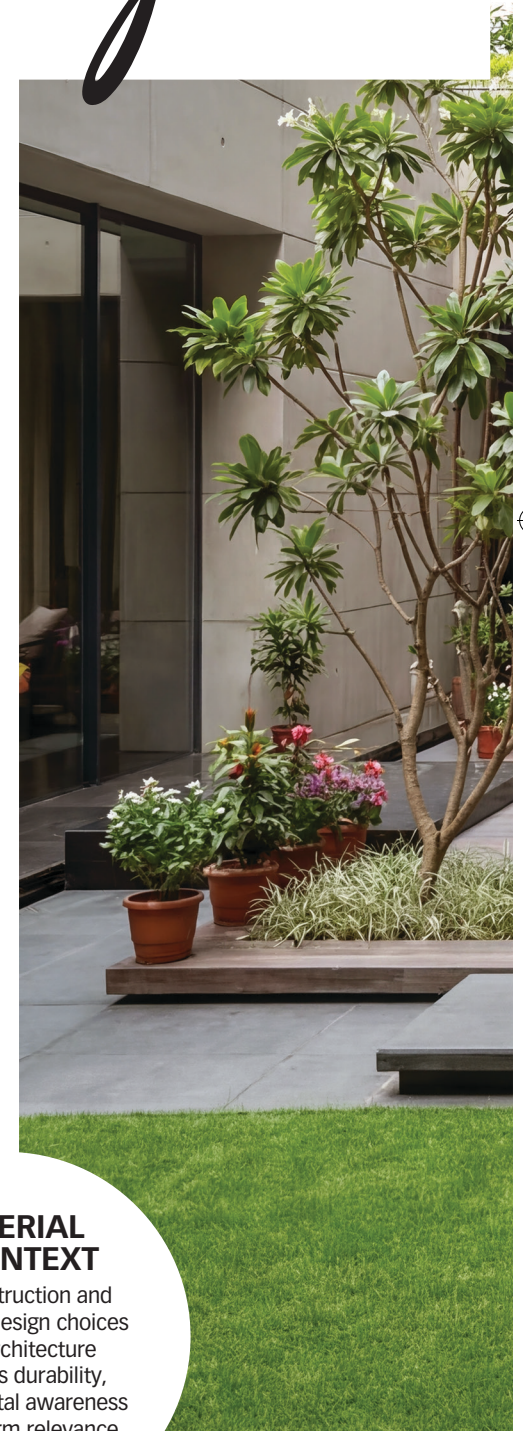
FEATURE **MONIKA CHOUDHARY**
PHOTOGRAPHS COURTESY **HABITAT ARCHITECTS**

In today's architectural discourse, sustainability has become a familiar word. Often repeated. Frequently diluted. Reduced to certifications, compliance checklists and surface-level gestures. Yet a genuinely responsible approach to architecture demands something far deeper. It is not a label to be earned or an achievement to be announced. It is a position one takes.

At its core, architecture is an act of responsibility. Every building alters land, consumes resources and shapes behaviour, sometimes in ways we only fully understand years later. As urbanisation accelerates and the global built footprint expands, the role of

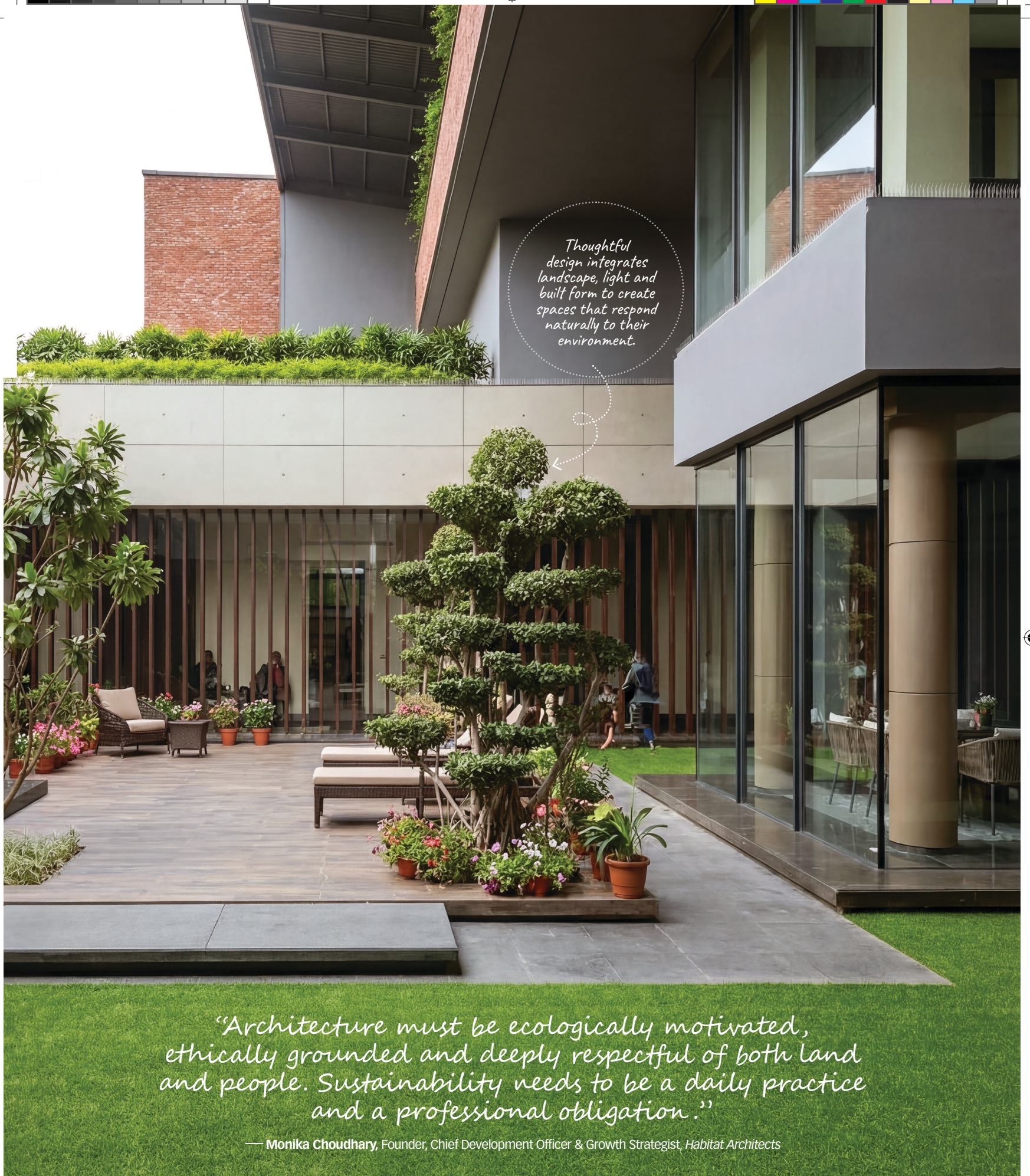
architects can no longer be limited to efficiency or visual appeal alone. What matters is how consciously we choose and how willing we are to acknowledge long-term consequences, environmental, social and cultural.

This kind of practice moves beyond passive sustainability measures. It does not ask how little damage we can do, but how deliberately we can build. It recognises ecology, ethics, labour, sourcing, longevity and human experience as part of a single, interlinked system. A building is not responsible because it performs well on paper. It is responsible when it quietly enables healthier ways of living, working and coexisting with



MATERIAL IN CONTEXT

Brick construction and contextual design choices reflect architecture that values durability, environmental awareness and long-term relevance.



Thoughtful design integrates landscape, light and built form to create spaces that respond naturally to their environment.

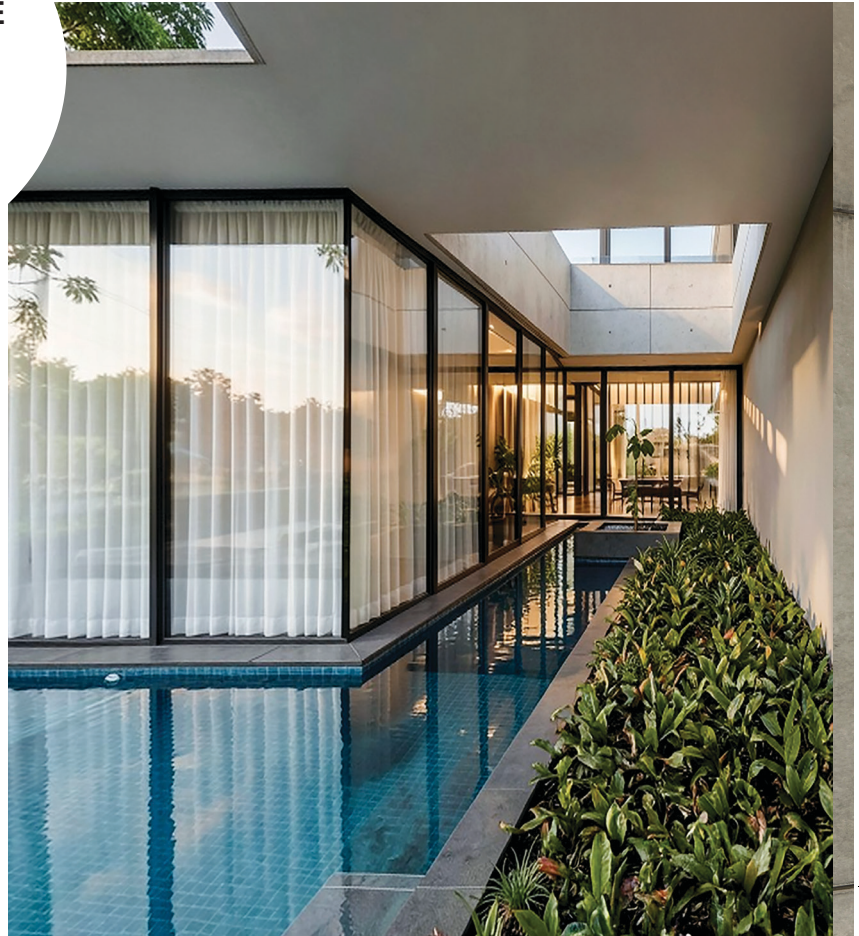
“Architecture must be ecologically motivated, ethically grounded and deeply respectful of both land and people. Sustainability needs to be a daily practice and a professional obligation.”

— **Monika Choudhary**, Founder, Chief Development Officer & Growth Strategist, *Habitat Architects*



CRAFT AND THE CONSCIENCE

Thoughtful architecture emerges from craftsmanship, material honesty and respect for the environment.



“As urbanisation accelerates and the global built footprint expands, the role of architects can no longer be limited to efficiency or visual appeal alone.”

— **Monika Choudhary**, Founder, Chief Development Officer & Growth Strategist, *Habitat Architects*



the environment, and when its benefits endure beyond the moment of completion.

Material thinking is central to this approach. Materials are not neutral. Each carries a footprint, a place of origin and a human story. Thoughtful selection means prioritising local resources, low embodied energy, durability and ethical procurement, while remaining attentive to craft traditions and regional knowledge. It is less about specification as consumption, and more about choosing with intent.

Equally important is the human dimension of building. Responsibility extends to how projects are executed, how labour is treated, how teams collaborate

and how safety, dignity and fairness are upheld on site. The built environment cannot claim ethical ground if it is created through invisible exploitation or a disregard for the people who bring it into being.

The future of architecture will not be defined by how many green buildings we produce, but by how thoughtfully we shape environments that allow responsible living to occur naturally. The discipline must move away from symbolism and metrics alone, towards purpose and substance. After all, responsible architecture is not the future. It is the baseline we should already be working from.





Natural light, restrained materials and integrated greenery shape a space designed with environmental sensitivity.



**MONIKA
CHOUHARY**

**Founder, Chief Development
Officer & Growth Strategist,
Habitat Architects**

Monika Choudhary is a strategist, cultural narrator and design leader shaping the evolving language of design in India. At Habitat Architects, she steers the firm's direction towards innovation, luxury and environmental responsibility.

With an interdisciplinary background spanning interiors and fashion design, her work bridges strategy and creativity, shaping spaces that are culturally nuanced and globally attuned, while remaining deeply rooted in context and human experience.

